



Capability Statement

Swietelsky Rail Australia



We recognise the First Peoples of this Nation and their ongoing cultural and spiritual connections to the lands, waters, seas, skies, and communities we connect with, and acknowledge the Wonnarua people as the Traditional Custodians and caretakers of the lands and waterways where Swietelsky Rail Australia reside.

We acknowledge First Nations Peoples as the Traditional Custodians and Lore Keepers of the oldest living culture and pay respects to their Elders past and present. We extend that respect to all First Nations Peoples.

**Always was,
always will be,
Aboriginal land.**



Acknowledgement of Country



Company overview

With our dedicated team and state-of-the-art equipment working in unison, we deliver the precision, reliability and performance our clients need to achieve safe, efficient and successful project outcomes.

We know that our people are the foundation of our business. We take care of our people, so our people can take care of our business. We empower and respect our team, whilst offering a safe environment. This is an approach that we have integrated into not only our processes, but our daily habits.

As a subsidiary of the international Swietelsky, we are backed by more than eight decades of extensive experience. Combined with the local knowledge of our team, we are able to provide specialised track maintenance, including Ballast Cleaning, Resurfacing, Track Ballasting, Projects, and Rail and Civil Maintenance.

Swietelsky Rail Australia (SRA) employees are amongst the most skilled and experienced staff within the Australian rail industry. Our proven record in delivering mechanised track rehabilitation systems extends to all aspects of track infrastructure maintenance.

We are proud of our fleet capabilities delivering value for our clients and optimising the performance of their assets.

SRA combines deep industry expertise with advanced technology to deliver high-quality ballast cleaning and resurfacing solutions. Our focus on continuous improvement ensures consistent performance, reliability and efficiency across every project.

Anne Connors

Managing Director
Swietelsky Rail Australia

Contents

- 08 Vision & Mission**
- 09 Values
- 10 Accreditation and Certifications
- 12 Rail services**
- 12 Ballast Cleaning
- 14 Material Handling Systems
- 16 Resurfacing
- 18 Rail and Civil maintenance**
- 20 Projects**
- 22 Ballast Cleaning Capability Overview
- 24 Muswellbrook Ballast Cleaning
- 26 Baan Baa Ballast Cleaning
- 28 Calwalla–Dombarton Ballast Unloading
- 30 Civil and Drainage Improvements
- 32 Sydney Trains Metropolitan Resurfacing
- 34 ARTC National Resurfacing Program





Vision & Mission

Our vision

To become an industry leader and preferred contractor for rail, civil, and mechanised maintenance projects within the Australian rail market.

Our mission

Increase our market footprint by safely delivering value and quality outcomes for our clients, leveraging international experience and local expertise.

At the core of Swietelsky Rail Australia are our people. As a team we are proud to continuously champion our values in our daily practices.

Our business is designed specifically to service the Australian rail market, and our team is the driving force behind our ability to deliver positive client outcomes.

Our values were created by our people for our people. They shape the way we support each other to deliver successful client outcomes.



Family

Family first. Always.
Swietelsky family second. Always.
We support and encourage each other.
We keep ourselves and our families safe.



Respect

We are respectful and constructive.
We are transparent and truthful.
We all have a voice worth hearing.
We listen without judgement.



Integrity

We own our actions.
We do what we say.
We speak up.
We are Swietelsky.



Excellence

We do it right the first time, every time.
We are proud of our work.
We perform at the highest level.
We deliver superior machine performance.



Accreditation and Certifications

Swietelsky Rail Australia is committed to ensuring our team members remain safe and incident free whilst at work, ensuring hazards and risk are eliminated or minimised.

SRA delivers class-leading performance, with a quality of work that is second to none. Our operations are designed to be eco-friendly and resource-efficient, ensuring that every project contributes to safer, cleaner and more sustainable rail networks.

Our integrated Swietelsky Assurance Management System embeds the highest standards of safety, quality and environmental management across all projects. This framework ensures full compliance with client, regulatory and industry requirements while driving continual improvement in performance and accountability.

As a certified Family Inclusive Workplace, we are equally committed to creating a supportive and inclusive environment for our people. This certification reflects our belief that strong performance begins with a culture that values wellbeing, flexibility and respect-enabling our teams to deliver their best work, both on and off the track.

SRA is currently progressing accreditation with the Office of the Federal Safety Commissioner (FSC). Achieving FSC Accreditation will further demonstrate our commitment to the highest standards of safety, quality and risk management across our projects. This accreditation will enable us to deliver Commonwealth-funded works, strengthen our governance framework, and provide assurance to clients that our systems, culture and on-site practices meet nationally recognised best-practice safety benchmarks.

SRA hold the following certificates and accreditations:

- **ISO 9001:2015**
Quality management systems
- **ISO 14001:2015**
Environmental management systems
- **ISO 45001:2018**
Occupational health and safety management systems
- **Rolling Stock Operator (RSO) ONRSR Accreditation**



Family Inclusive Workplace™
CERTIFIED 2023-2025



RM95 RT High-Capacity Ballast Cleaning Machine

A two-section, high output ballast cleaning machine for plain track and turnouts. The RM95 is one of the most powerful standard gauge ballast cleaning machines in the Plasser & Theurer production range.

Fitted with a high-capacity vibration screen with compensation of superelevation and Data Acquisition Recorder. It also has the ability to install geofabric as it operates, providing improved rail asset performance benefits for clients.

It is fully compliant with the narrow non-electric rolling stock outline, allowing it to work and travel within more networks across Australia.



RM80 UHR High Performance Ballast Cleaning Machine

High performance ballast cleaning machine for plain track and turnouts. The RM80 is fitted with a high-powered cutting chain and specially designed screening unit to ensure high working speeds, even in poor ballast conditions. Fitted with a high-capacity vibration screen with compensation of superelevation and Data Acquisition Recorder.

The RM80 has been operating in Australia since 2014, and has successfully completed over 330km of ballast cleaning for the Australian Rail Track Corporation's Hunter Valley network in NSW.





Material Handling Systems



MFC 45 Material Handling Wagons

Single line spoil and material handling wagons, specially designed for use by Swietelsky. A reliable fleet operating in Australia since 2014. The fleet includes eight wagons, each with a volumetric capacity of 38 cubic metres.

The material conveyor and hopper units serve both to supply material and to transport the excavated material away without using the adjacent track. The excavated material can be unloaded to temporary storage sites, or on to wagons or trucks via swiveling conveyor belts fitted to each wagon.

The wagons are equipped with an automatic start/stop which reduces fatigue and enhances safety for operators. Also includes tilt warning protection to prevent excess load occurring on the slewed conveyor.



MFS Material Handling Wagons

The material conveyor and hopper units serve both to supply material and to transport the excavated material away without using the adjacent track. The excavated material can be unloaded to temporary storage sites or onto wagons/trucks via swiveling conveyor belts.

The fleet comprises two consists of four wagons, providing eight wagons in total, and each wagon has a volumetric capacity of 40 cubic metres. Each allows for continuous material loading and unloading, utilising three fixed conveyors and one slewing conveyor.

Working in unison with our RM95 Ballast Cleaner, this fleet is helping deliver early works ballast rehabilitation as part of ARTC's Network Investment Program, enhancing efficiency and reliability across the network.



Resurfacing



09-3X Dynamic Tamping Machine

Heavy-duty, high speed, continuous action production track tamping and stabilising machine. Fitted with Dynamic Track Stabilisation for rapid and controlled 3D consolidation of the track. Functions include levelling, lining and 3 sleeper tamping.



09-3X Tamping Machine

Designed for the maintenance of high-density lines.

Functions include levelling, lining and 3 sleeper tamping.



SSP 302 Ballast Regulator

High performance ballast regulating and profiling machine, fitted with a heavy duty cruciform main plough.



2 x SSP303 Ballast Regulators

Our fleet includes two high performance ballast regulating and profiling machines with storage hoppers. Articulated design with shoulder ploughs, center plough, brush box and hopper as well as water spraying devices for dust suppression.

Capable of performing all ballast profiling, regulating and track brooming functions in a single continuous forward pass of the machine.



Unimat 08-275/3S Tamping Machine

Cyclic action single-sleeper levelling, lifting, lining and tamping machine with three-rail lifting for plain track and turnouts.

In addition to owning, operating and maintaining this fleet, SRA has experience operating and maintaining client owned track machines. Most recently our SRA team supported the safe and reliable operation of Bowen Rail Company's tamper and ballast regulator on the Carmichael Rail Network.

Rail & Civil Maintenance

Track maintenance

The SRA team offers a diverse range of skills and experience across all aspects of track infrastructure maintenance.

Our team is able to deliver in areas of track examination, detailed scoping of defect rectification works packages, track certification, project management of track maintenance works and more.

Specifically, we are able to provide the following in-house capabilities:

- Track certification – examination and certification of all track and drainage works
- Detailed scoping and condition reports, including required track corrections
- Detailed track and turnout inspections
- Level crossing upgrades
- Defect management
- Track corrections supervision
- Rail adjustment/destress (PICS)
- Track reconditioning and project management
- Ballast distribution
- Quality Assurance

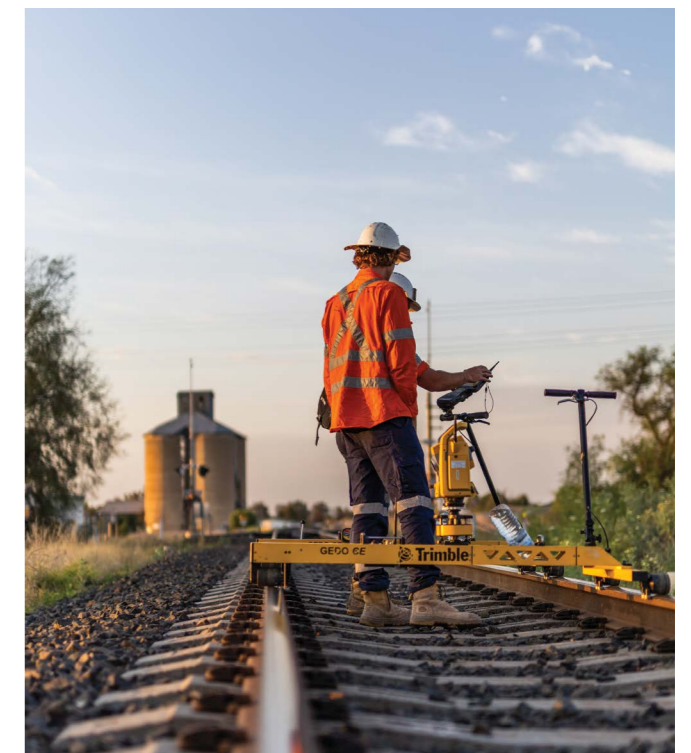


Civil maintenance

SRA delivers a full range of civil works within the rail corridor. Whether integrated with track maintenance and renewal activities or delivered independently, our fence-to-fence approach ensures safe, efficient and high-quality outcomes for every project.

Specifically, we are able to provide the following in-house capabilities:

- Safe and effective management and control of undesirable vegetation (AQF3 Chemical Accreditation)
- Drainage maintenance and drainage system upgrades
- Fencing management and repair
- Culvert removal and installation
- Cut up and remove scrap/redundant rail





Projects

Ballast Cleaning Capability Overview

Client Focus: Australian Rail Track Corporation (ARTC)

Experience: Over 330 kilometres of ballast cleaning delivered within NSW Hunter Valley Heavy Haul network since 2014

Overview

SRA is the industry leader in mechanised ballast cleaning for heavy haul and mainline networks, providing critical maintenance solutions that enhance safety, performance, and longevity of Australia's rail infrastructure.

Since 2014, SRA has been the exclusive provider of ballast cleaning services for the ARTC Hunter Valley network, delivering more than 330 kilometres of cleaned and renewed track. With a proven record of success across both planned and reactive programs, SRA continues to set the benchmark for reliability, precision, and sustainability in mechanised maintenance.

“Eleven years of sustained delivery across more than 330 kilometres of ballast cleaning is an extraordinary achievement and has set a benchmark for sustainable mechanised maintenance”

- Anne Connors, Managing Director.

Our approach

Fence-to-fence betterment

SRA is the industry leader in mechanised ballast cleaning for heavy haul and mainline networks, providing critical maintenance solutions that enhance safety, performance, and longevity of Australia's rail infrastructure.

Since 2014, SRA has been the exclusive provider of ballast cleaning services for the ARTC Hunter Valley network, delivering more than 330 kilometres of cleaned and renewed track. With a proven record of success across both planned and reactive programs, SRA continues to set the benchmark for reliability, precision, and sustainability in mechanised maintenance.

“Eleven years of sustained delivery across more than 330 kilometres of ballast cleaning is an extraordinary achievement and has set a benchmark for sustainable mechanised maintenance”

Specialist fleet and technology

SRA operates one of Australia's most capable mechanised maintenance fleets, featuring:

- RM95 Ballast Cleaner: capable of high-output cleaning with integrated geofabric installation to improve track stability and bearing capacity.
- RM80 Ballast Cleaner: the workhorse of the Hunter Valley network, delivering reliable performance for over a decade.
- MFS & MFC Material Handling Wagons: specialised single-line wagons with swivelling conveyors for efficient spoil management and minimal environmental impact.

This modern fleet is supported by experienced operators, maintainers, and planners who integrate European technology and Australian know-how to achieve world-class results.

Impact

SRA's ballast cleaning operations are underpinned by a commitment to environmental responsibility and resource efficiency. Across its programs, SRA has successfully reused over 180,000 tonnes of recovered ballast and spoil for corridor and access road improvements, significantly reducing waste and carbon emissions.

SRA's continuous improvement philosophy drives investment in sustainable technology, including advanced dust suppression, waste reduction initiatives, and energy-efficient plant.

Proven performance

SRA's ballast cleaning operations are underpinned by a commitment to environmental responsibility and resource efficiency. Across its programs, SRA has successfully reused over 180,000 tonnes of recovered ballast and spoil for corridor and access road improvements, significantly reducing waste and carbon emissions.

SRA's continuous improvement philosophy drives investment in sustainable technology, including advanced dust suppression, waste reduction initiatives, and energy-efficient plant.

Muswellbrook Ballast Cleaning – ARTC Hunter Valley Network

Client: Australian Rail Track Corporation (ARTC)

Location: Muswellbrook, NSW

Scope: Ballast cleaning and drainage upgrades – Heavy Haul Network

Overview

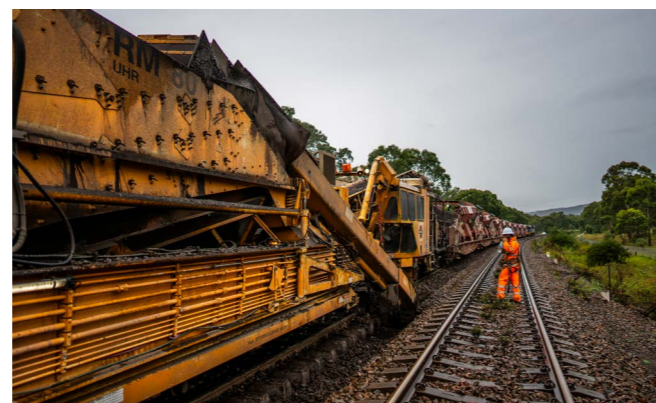
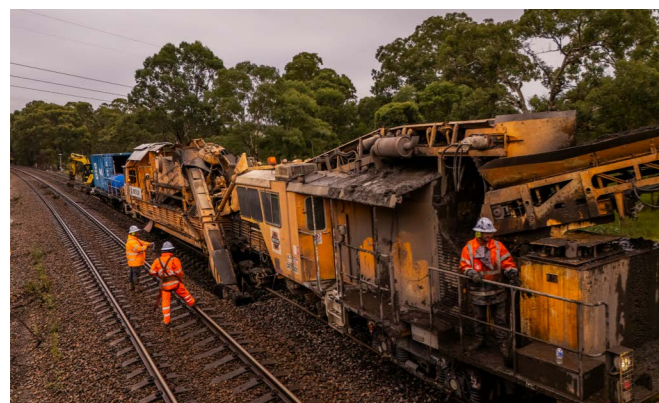
SRA achieved another major milestone in Muswellbrook, successfully completing critical ballast cleaning works to enhance the reliability and longevity of the ARTC heavy haul network in the Upper Hunter region.

Despite challenging wet weather, the SRA team exceeded project expectations delivering more than planned scope while maintaining exceptional safety, quality and environmental performance.

Project delivery

The program spanned more than 10 kilometres of rail corridor and involved a combined fleet of 20 on- and off-track machines. The team completed 3,975 metres of mechanised ballast cleaning (118% of planned scope), installed over 6,000 tonnes of new ballast, and undertook 5 kilometres of drainage upgrades. An additional 260 metres of undercutting was performed to remove bog holes and improve formation performance.

All works were completed incident-free, with the track handed back at line speed.



Challenges and outcomes

Adverse weather tested planning and delivery, yet the team demonstrated flexibility and resilience—adapting schedules, redeploying resources, and maintaining productivity throughout. All project spoil was reused on site to complete critical safety upgrades to access roads, reinforcing SRA’s commitment to sustainable operations and zero-waste principles.

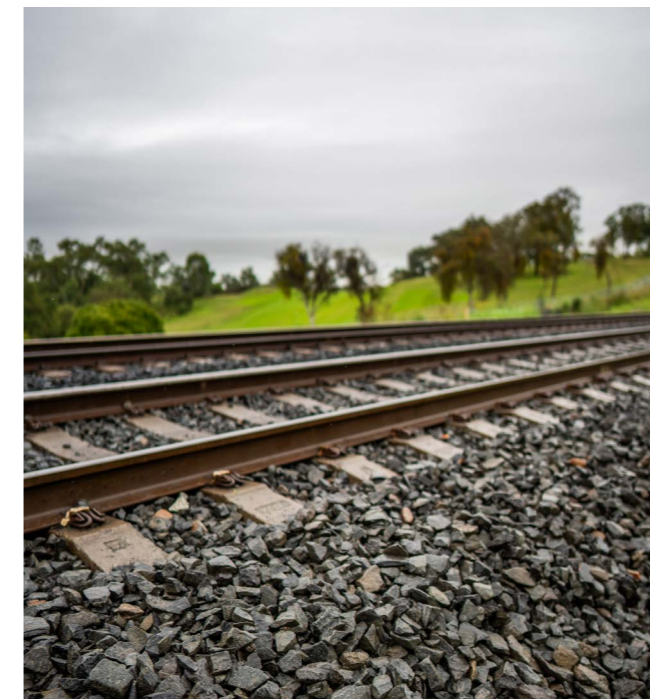
People and culture

The project coincided with Rail RUOK? Day, providing an opportunity for the team to pause and reflect on the importance of mental health and peer support in high-pressure environments.

“Delivering more than planned and maintaining a safe and quality-driven environment is a testament to the professionalism and capability of our workforce.” - Ben Rogers, Operations Manager, Swietelsky Rail Australia

Impact

The Muswellbrook project further strengthens SRA’s decade-long track record of delivering large-scale mechanised maintenance projects across the Hunter Valley network. Recognised nationally as a finalist in the inaugural Australian Heavy Haul Rail Awards, SRA continues to set the standard for reliability, innovation, and sustainability in rail maintenance.



Baan Baa Ballast Cleaning Final Project in 2024 Program

Client: Australian Rail Track Corporation (ARTC)

Location: Baan Baa, NSW

Scope: Mechanised ballast cleaning, resurfacing, drainage, and level crossing upgrades

Overview

SRA has been the exclusive provider of mechanised ballast cleaning services for ARTC's Heavy Haul Hunter Valley network since 2014. The Baan Baa project represented the final major ballast cleaning deliverable of ARTC's 2024 maintenance program, successfully delivered within a compressed 72-hour possession

SRA's "fence-to-fence betterment" approach ensured that the project extended beyond traditional ballast cleaning to include track resurfacing, drainage upgrades, and level crossing improvements-maximising asset performance and lifecycle value.



Project delivery

Over a 15-kilometre rail corridor, the team completed 5.5 kilometres of ballast cleaning, installed more than 9,200 tonnes of new ballast, and resurfaced 23 kilometres of track, including full dynamic stabilisation to enable track handback at line speed.

The scope also included critical drainage works across two large cuttings, upgrades to multiple level crossings, and targeted vegetation control and spoil management, ensuring safe and efficient access across all work areas.

Challenges and outcomes

Delivered under a tight 72-hour window, the project required precise pre-possession planning, robust logistics coordination, and seamless integration of multi-disciplinary crews. The team's experience and proactive site management ensured that all client requirements were achieved safely, on schedule, and to specification.

"Our success comes from our fence-to-fence approach, our experienced team, and how we work closely with our client throughout every phase." - Gary Milligan, SRA Project Lead

Impact

By combining ballast cleaning with associated track, drainage, and civil betterments, SRA significantly enhanced the performance and stability of the Hunter Valley heavy haul network. The Baan Baa project exemplifies SRA's ability to integrate specialist rail maintenance and civil works under a single, coordinated delivery model-restoring, optimising, and future-proofing rail assets for long-term performance.



Calwalla–Dombarton Ballast Unloading Main South Line Upgrade

Client: Australian Rail Track Corporation (ARTC)

Location: Calwalla–Dombarton, NSW

Scope: Ballast unloading and logistics support for Main South Line

Overview

During the ARTC Super Shut in September 2025, SRA successfully delivered a major ballast unloading program in the Calwalla–Dombarton section of the Main South Line. The works formed part of ARTC’s broader network upgrade strategy to improve track performance, safety, and reliability ahead of summer heat restrictions.



Project delivery

Over a nine-day period, SRA pre-delivered more than 4,500 tonnes of ballast in a sensitive community area before safely and efficiently unloading an additional 6,000 tonnes during the three-day possession. Using manual operation of the Sydney Trains ballast rake, the team strategically placed ballast along steep grades and reserve curves between Summit Tank Escarpment and Robertson.

These works prepared the corridor for subsequent track machine operations, enabling 100mm lifts and 250mm alignment corrections - critical interventions to mitigate buckle-prone track sections and improve network resilience.

Challenges and outcomes

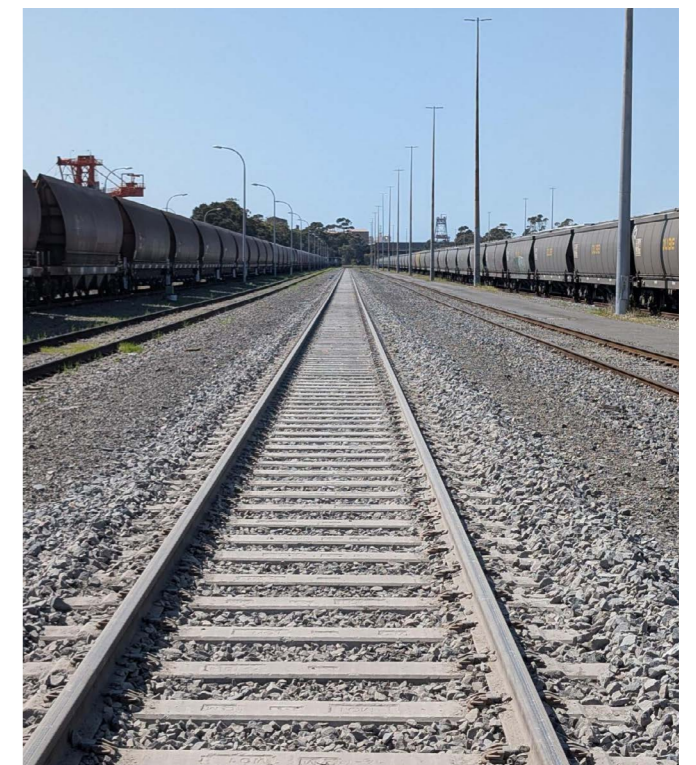
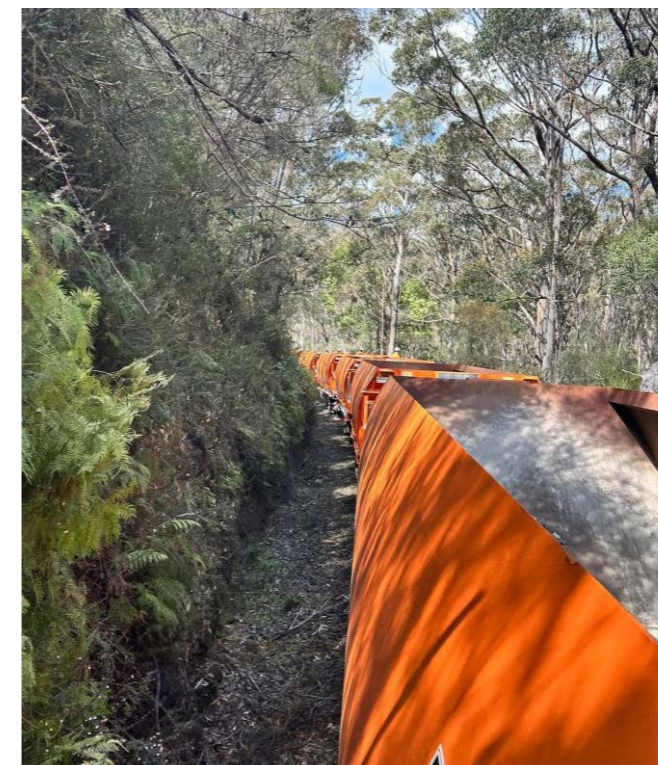
Working in constrained topography and populated community areas required careful sequencing, clear communication, and close coordination between unloading crews, logistics partners, and ARTC representatives. Despite these complexities, the project was delivered ahead of schedule, incident-free, and with zero community or environmental complaints.

“Well done team! Without this work we could not have rectified the buckle-prone curves on that line a week later. Excellent job on working with us to make the deliveries in a sensitive community.” - Nathaniel Gomes, Project Manager – Major Maintenance, ARTC (SRA Linked In page)

Impact

The project highlighted SRA’s integrated approach to safety, quality, and stakeholder engagement. Effective ballast depth and profile directly contribute to improved track stability, reduced rollingstock wear, and enhanced long-term performance - delivering lasting value to ARTC and the communities along the Southern Corridor.

Through disciplined execution and strong collaboration, SRA once again demonstrated its capability to deliver high-quality, sustainable outcomes within complex operating environments.



Civil and Drainage Improvements – Muswellbrook

Client: Australian Rail Track Corporation (ARTC)

Location: Muswellbrook, NSW

Scope: Drainage upgrades, civil maintenance, embankment stabilisation, and vegetation control

Overview

Under its new five-year panel contract with the Australian Rail Track Corporation (ARTC), SRA continues to strengthen its reputation as a trusted partner in rail and civil maintenance.

As part of the November 2024 shutdown, SRA's drainage team successfully completed a comprehensive package of works in Muswellbrook, improving long-term asset resilience and safety across the Hunter Valley heavy haul network.



Project delivery

The project involved over 4.5 kilometres of drainage improvements and vegetation control through challenging terrain, including two major cuttings with restricted access and three bridge crossings over Muscle Creek requiring careful embankment stabilisation.

The team also upgraded two level crossing approaches, enhanced nearby access roads, and implemented targeted safety improvements in preparation for future works. Despite the complexity of operating within a constrained, high-traffic corridor, all works were completed safely, on time, and to specification.



Challenges and outcomes

The combination of limited access, multiple concurrent worksites, and tight possession windows demanded meticulous planning, real-time coordination, and clear communication between teams. SRA's disciplined execution and use of advanced drainage and civil plant enabled the seamless delivery of scope without disruption to surrounding activities.

“Our drainage team showed exceptional skill and coordination to meet all the project scope within the shutdown. By improving the drainage and embankment stability around the bridges and crossings, we've ensured better long-term asset performance and safer conditions for all future rail operations in this corridor.” - Andrew Petersen, SRA Project Manager.

Impact

Delivered concurrently with SRA's Baan Baa Ballast Cleaning project, the Muswellbrook works exemplify SRA's capacity to manage multi-disciplinary programs safely and efficiently across the network. Through integrated planning, skilled execution, and strong project management, SRA continues to deliver high-quality, enduring outcomes that support ARTC's national network performance and sustainability goals.



Sydney Trains – Metropolitan Resurfacing Services

Client: Sydney Trains / Transport for NSW

Location: Sydney NSW

Contract: Up to 8 years from September 2025

Scope: Plain line and turnout resurfacing across the metropolitan network

ARTC National Resurfacing Program – Driving Network Performance and Reliability

Client: Australian Rail Track Corporation (ARTC)

Location: National network – Hunter Valley and Main South corridors

Period: August to October 2025

Scope: Track resurfacing, plain line and turnout tamping, and track geometry correction

Overview

SRA currently delivers plain line and turnout resurfacing services for Sydney Trains under a long-term Master Services Deed (MSD) of up to eight years, supporting the ongoing performance, safety and reliability of the high-density Sydney metropolitan rail network. These works are essential to ensuring smooth, safe and dependable operations for millions of daily passenger journeys.

Project delivery

SRA deploys its specialised resurfacing fleet, including high-output plain line tampers and Unimat turnout tamper, to undertake critical maintenance during overnight access windows, weekend possessions and live operating environments.

Our delivery teams work closely with Sydney Trains' operations, corridor access and electrical isolation teams to plan and sequence works safely and efficiently within highly constrained metropolitan access windows.

Outcomes

Through a disciplined, collaborative and precision-driven approach, SRA consistently improves track geometry, reduces defects and enhances ride quality with minimal disruption to the network timetable.

The long-term MSD reflects Sydney Trains' confidence in SRA's capability to provide safe, reliable and high-performance resurfacing services, reinforcing a strong partnership and shared commitment to a resilient and customer-focused metropolitan rail network.

Overview

Between August and October 2025, SRA successfully delivered a coordinated program of resurfacing works for the ARTC, improving network performance, safety, and long-term reliability across multiple corridors.

The ARTC National Resurfacing Program showcased SRA's ability to plan and execute high-output track maintenance across all access types - from 8-hour maintenance windows to weekend and major possessions with a consistent focus on safety, quality, and client collaboration.

Leveraging its specialist mechanised fleet, including the 09-3XD high-production plain line tamper, 08-275S and SSP303 Unimat turnout tampers, and associated support plant, SRA delivered a significant uplift in track condition across the Hunter Valley and Main South lines.

Project delivery

Across key locations including Minimbah, Scone, Quirindi, and the Upper Hunter, SRA's resurfacing teams worked under tight possession conditions to deliver measurable performance improvements.

Over the three-month period, SRA:

- Tamped and undercut more than 40 kilometres of track across heavy haul and mainline corridors
- Completed over 10 turnouts and catch points
- Removed seven Temporary Speed Restrictions (TSRs) through geometry correction and targeted resurfacing
- Achieved 100% scope completion, 100% machine reliability, and zero incidents or injuries
- Delivered proactive hazard identification and additional client-requested scope within each possession window

SRA's delivery included proactive engagement with ARTC during live works sharing hazards and opportunities. Supervisors and engineers continually assessed track conditions and, with client agreement, regularly expanded scope to rectify emerging defects while machines were on site. This approach maximised productivity, reduced the need for future interventions, and delivered genuine value for money across every project.

The scope was delivered across various types of possessions, including weekend possessions, major closedowns and 8-hour maintenance windows.

Challenges and outcomes

Operating across multiple sites in active heavy haul and regional passenger corridors required precision planning, tight sequencing, and constant communication with network control. Despite variable weather and operational complexity, all work was delivered ahead of schedule, incident-free, and with zero community or environmental complaints.

SRA's client-first approach ensured emerging defects were addressed in real time, turning potential delays into opportunities for improvement. This adaptability reinforced trust, optimised possession time, and ensured that every shift delivered maximum technical and commercial value.

“These works reflect the professionalism, skill, and consistency of our resurfacing teams, who continue to deliver measurable improvements in track quality and reliability for ARTC across Australia.” - Ben Senior, SRA Engineering and Maintenance Manager.

Impact

The 2025 National Resurfacing Program demonstrates SRA's ability to deliver sustained, high-output performance across the ARTC network. By combining technical expertise, disciplined planning, and a proactive client partnership approach, SRA continues to strengthen ARTC's asset performance, reduce maintenance costs, and support safe, efficient operations across the national rail network.

SRA will continue to support this national program of work under our current contract to 2029.





Swietelsky Rail Australia

13A Junction Street

Telarah NSW 2320

T: +61 (02) 4004 5040

E: tenders.sra@swietelsky.com

ABN: 57 148 837 165

